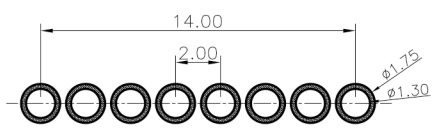
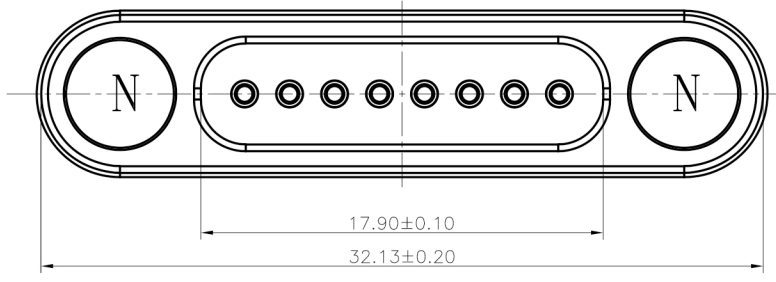
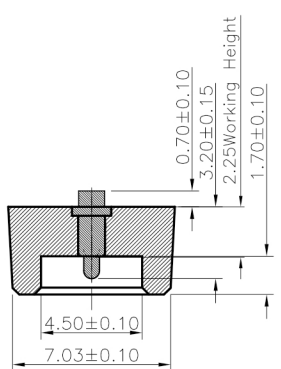
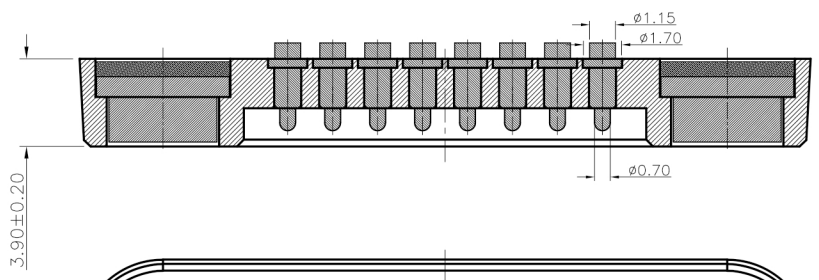
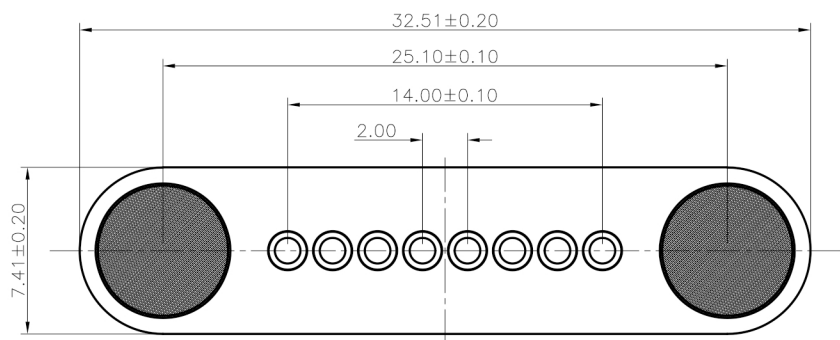


Please Approve this Drawing
Date
Signature

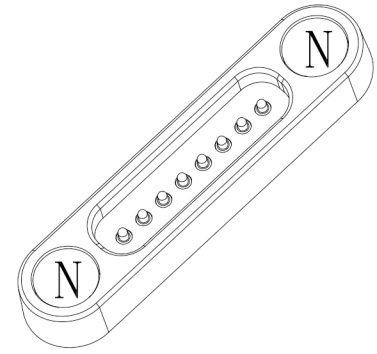
NO.	Part Name	Q'TY	Material	Plated surface
1	Plunger	8	无铅铜	AU 10U" MIN OVER 50~120 U" NI
2	Barrel	8	无铅铜	AU 10U" MIN OVER 50~120 U" NI
3	Spring	8	SUS304	N/A
4	Magnet	2	NdFeB N52	Plating Ni
5	Housing	1	High temp.Plastic; UL94 V-0 Color Black	



Recommended pcb layout
Layout tolerance: ±0.05mm

NOTES:

- Electrical
.Rated Current & Voltage : DC 12 V ; 1.0A
.Contact Resistance: 50 mohm maximum at Working Height(Quiescence)
- Mechanical
.Full store: 1.00 mm
.Spring Force: 35gf±10gf at Working Height
.Durability:10,000 cycles(minimum)
- Environmental
.Operating Temperature: -25°C~+85°C
.Humidity Range: 10%RH~90%RH
.Salt Spray: PIN:72 Hours Magnet: 48 Hours
.Dustproof and waterproof: IP65
- When the current is greater than 1A then need to increase the time delay circuit(3 second)
- To avoid arcing issue, The adaptor start to power supply after connector mated fully.
- To ensure the best usage,please operate it based on the working height.
- .RoHS&HF compliant product.

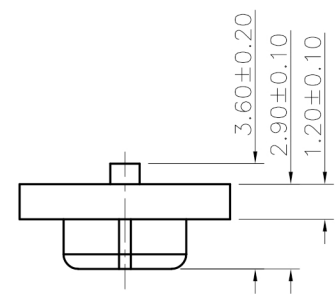
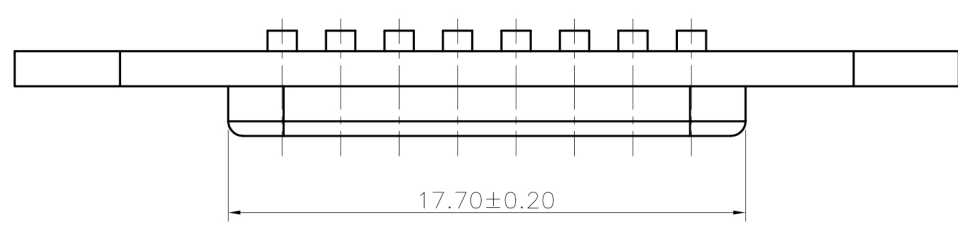
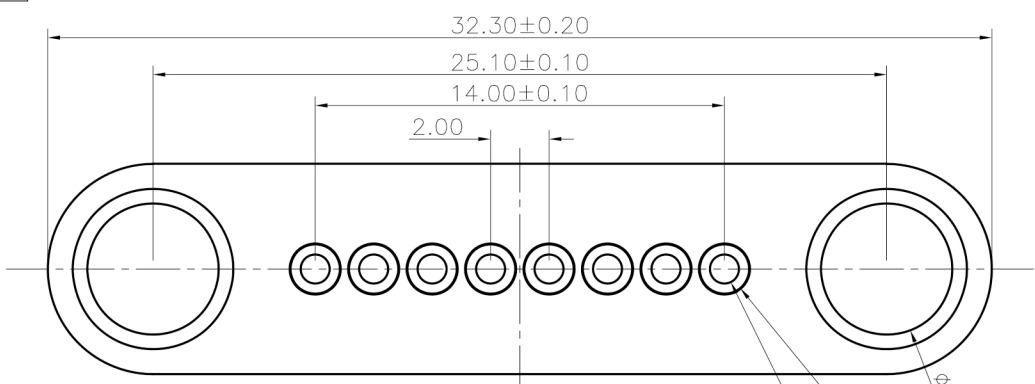


DRAWN	Eddie	DATE	2023.02.04			东莞市双盟电子有限公司	
CHECKED		SCALE	10:1	VER.	A.0		
APPROVED		TITLE	8pin male connector.			Ang:	Dim:
PROJECT		DRAWING NO.	PPM.08-5648-1002			0 ±1°	0 ±0.20
SHEET	1 of 1	UNIT	mm			.0 ±0.5°	.0 ±0.15
						.00 ±0.25°	.00 ±0.10

VER.	DESCRIPTION	ECN NO.	DATE

Please Approve this Drawing
Date
Signature

NO.	Part Name	Q'TY	Material	Plated surface
1	Plunger	8	无铅铜	AU 10U" MIN OVER 50~120 U" NI
2	Housing	1	High temp.Plastic; UL94 V-0 Color Black	
3				



NOTES:

- Electrical
.Rated Current & Voltage : DC 12 V ; 1.0A Max.
.Contact Resistance: 50 mohm maximum at Working Height(Quiescence)
- Environmental
.Operating Temperature: -20°C~+85°C
.Humidity Range: 10%RH~90%RH
.Salt Spray: 48 Hours
.Dustproof and waterproof: IP65
- .RoHS&HF compliant product.

DRAWN	Eddie	DATE	2023.02.04			东莞市双盟电子有限公司	
CHECKED		SCALE	10:1	VER.	A.0		
APPROVED		TITLE	8pin female connector.			Ang:	Dim:
PROJECT		DRAWING NO.	PPF.08-5648-1002			0 ±1°	0 ±0.20
SHEET	1 of 1	UNIT	mm			.0 ±0.5°	.0 ±0.15
						.00 ±0.25°	.00 ±0.10

VER.	DESCRIPTION	ECN NO.	DATE