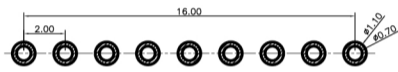
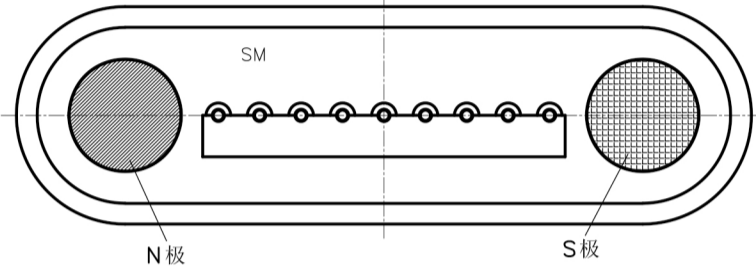
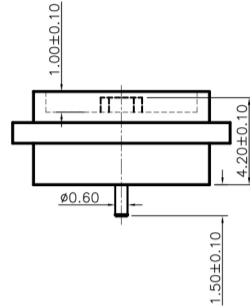
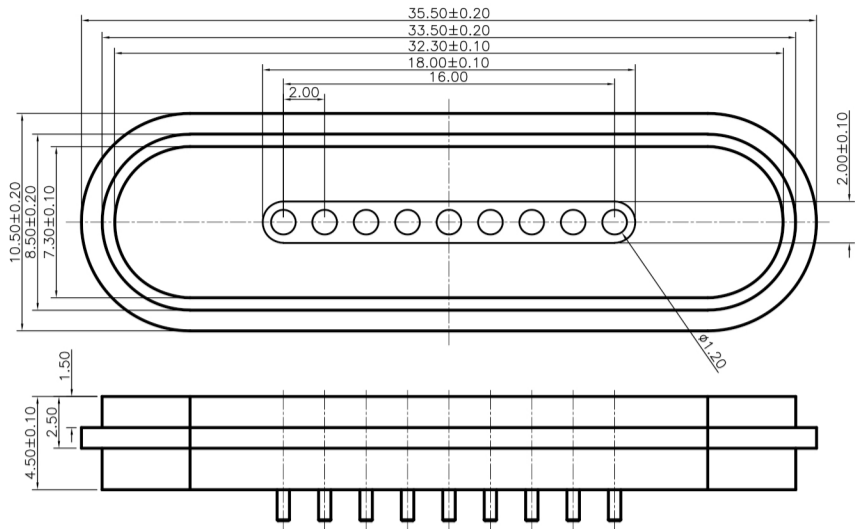


Please Approve this Drawing
Date
Signature

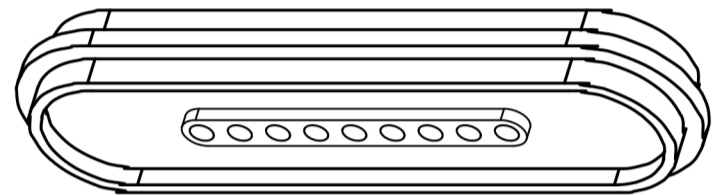
NO.	Part Name	Q'TY	Material	Plated surface
1	Pin	9	无铅铜 IB159	Au 5u" Min. OVER 50U~120" Ni
2	Magnet	2	NdFeB	Ni Plating
3	Housing	1	High temp.Plastic; UL94 V-0	Color Black



Recommended pcb layout
Layout tolerance: ±0.05mm

NOTES:

- Electrical
 - .Rated Current & Voltage : DC 12 V ; 3.0A Max.
 - .Contact Resistance: 50 mohm maximum at Working Height(Quiescence)
- Environmental
 - .Operating Temperature: -40°C~+85°C
 - .Humidity Range: 10%RH~90%RH
 - .Salt Spray: 48 Hours
 - .Dustproof and waterproof: IP65
- Male and female docking magnetic force: 880gf MIN.
- .RoHS&HF compliant product.



DRAWN	CDH	DATE	2022.11.02	东莞市双盟电子有限公司	
CHECKED		SCALE	10:1	VER.	A.0
APPROVED		TITLE	9pin female connector.	Ang:	Dim:
PROJECT	⊕	DRAWING NO.	PPF.09-345-0502	0 ±1°	0 ±0.15
SHEET	1 of 1	UNIT	mm	.0 ±0.5°	.0 ±0.10
				.00 ±0.25°	.00 ±0.05

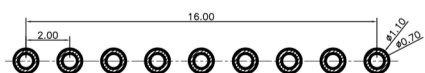
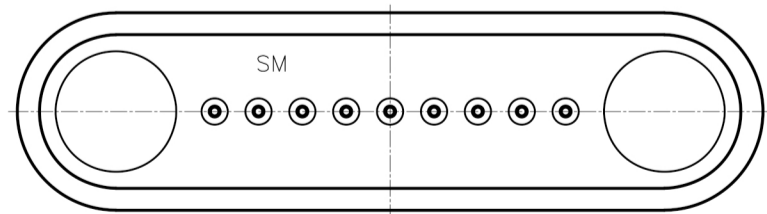
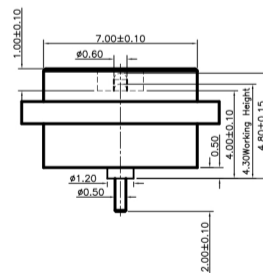
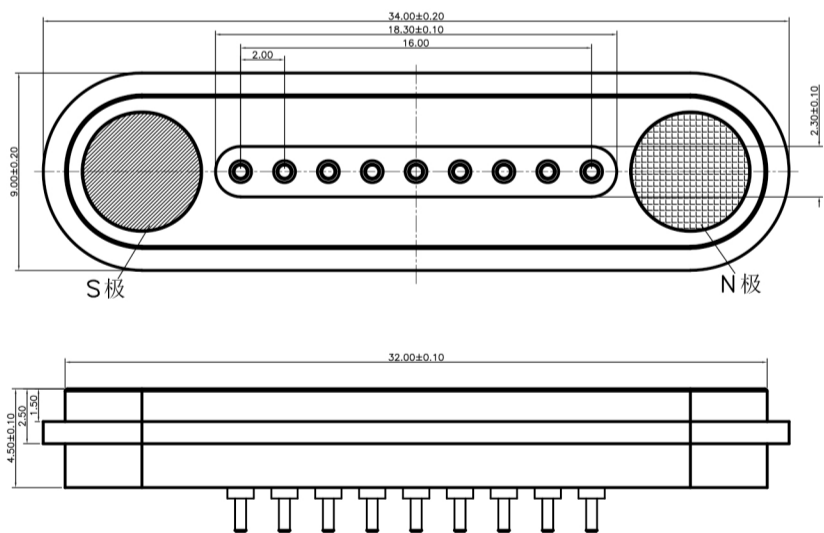
VER.	DESCRIPTION	ECN NO.	DATE
------	-------------	---------	------

Please Approve this Drawing
Date
Signature

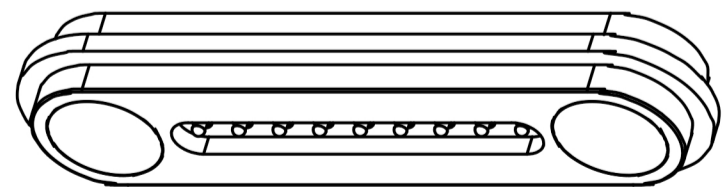
NO.	Part Name	Q'TY	Material	Plated surface
1	Plunger	9	无铅铜 IB159	Au 5u" Min. Over 50u" Min. Ni
2	Barrel	9	无铅铜 IB159	Au 3u" Min. Over 50u" Min. Ni
3	Spring	9	SUS304	
3	Ball	9	SUS304	Au 1u" Min. Over 50u" Min. Ni
4	Housing	1	High temp.Plastic; UL94 V-0	Color Black
5	Magnet	2	NdFeB N52	Plating Ni

NOTES:

- Electrical
 - .Rated Current & Voltage : DC 12 V ; 3.0A Max.
 - .Contact Resistance: 50 mohm maximum at Working Height(Quiescence)
- Mechanical
 - .Full store: 0.70 mm
 - .Working Store: 0.50 mm
 - .Spring Force: 40gf±10gf at Working Height
 - .Durability:30,000 cycles(minimum)
- Environmental
 - .Operating Temperature: -25°C~+85°C
 - .Humidity Range: 10%RH~90%RH
 - .Salt Spray: 48 Hours
- Male and female docking magnetic force: 880gf MIN.
- When the current is greater than 1A then need to increase the time delay circuit(3 second)
- To avoid arcing issue, The adaptor start to power supply after connector mated fully.
- To ensure the best usage,please operate it based on the working height.
- .RoHS&HF compliant product.



Recommended pcb layout
Layout tolerance: ±0.05mm



DRAWN	CDH	DATE	2022.11.02	东莞市双盟电子有限公司	
CHECKED		SCALE	10:1	VER.	A.0
APPROVED		TITLE	9pin male connector.	Ang:	Dim:
PROJECT	⊕	DRAWING NO.	PPM.09-345-0502	0 ±1°	0 ±0.20
SHEET	1 of 1	UNIT	mm	.0 ±0.5°	.0 ±0.15
				.00 ±0.25°	.00 ±0.10

VER.	DESCRIPTION	ECN NO.	DATE
------	-------------	---------	------