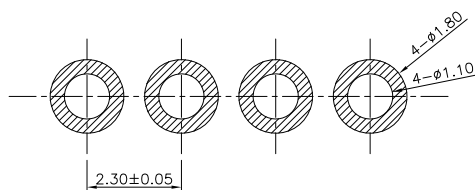
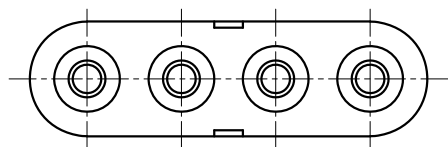
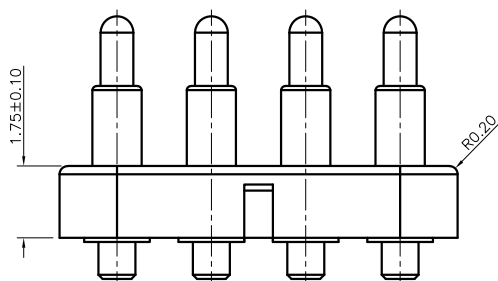
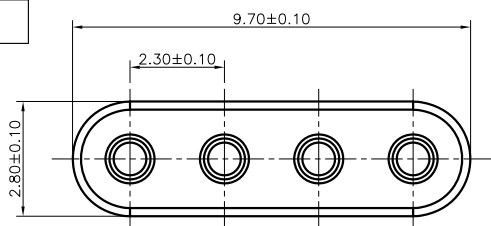


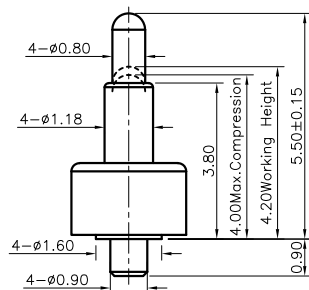
Please Approve this Drawing

Date

Signature



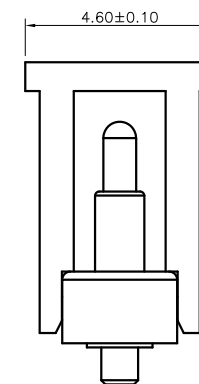
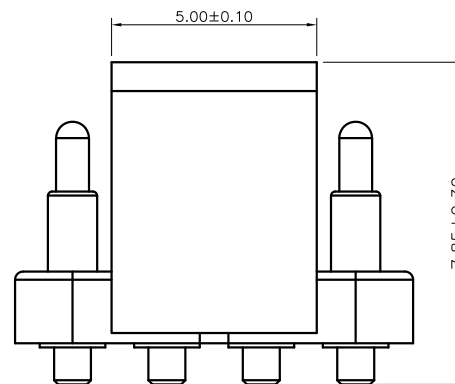
Recommended pcb layout
layout tolerance: ±0.05mm



NO.	Part Name	Q'TY	Material	Plated surface
1	Plunger	4	无铅铜	Au 5u" Min. OVER 50~120 U" Ni
2	Barrel	4	无铅铜	Au 3u" Min. OVER 50~120 U" Ni
3	Spring	4	SUS304	N/A
4	Housing&CAP	1	High temp.Plastic; LCP Color Black	

NOTES:

- Electrical
 - .Rated Current & Voltage : DC 12 V ; 2.0A
 - .Contact Resistance: 50 mohm maximum at Working Height(Quiescence)
- Mechanical
 - .Full store: 1.50 mm
 - .Working Store: 1.30 mm
 - .Spring Force: 60gf±15gf at Working Height
 - .Durability:10,000 cycles(minimum)
- Environmental
 - .Operating Temperature: -40°C~+85°C
 - .Humidity Range: 10%RH~90%RH
- When the current is greater than 1A then need to increase the time delay circuit(3 second)
- To avoid arcing issue, The adaptor start to power supply after connector mated fully.
- To ensure the best usage,please operate it based on the working height.
- .RoHS&HF compliant product.



DRAWN	LX	DATE	2023.03.14			东莞市双盟电子有限公司			
CHECKED		SCALE	10:1	VER.	A.0				
APPROVED		TITLE	pogo pin connector.			Ang:	Dim:		
PROJECT	⊙	DRAWING NO.	PPM.04-5756-0502			0 ±1°	0 ±0.20		
SHEET	1 of 1	UNIT	mm			.0 ±0.5°	.0 ±0.15		
						.00 ±0.25°	.00 ±0.10		

VER.	DESCRIPTION	ECN NO.	DATE