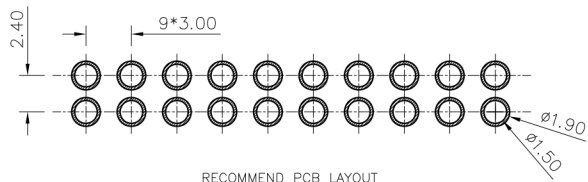
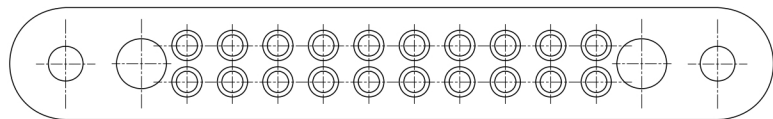
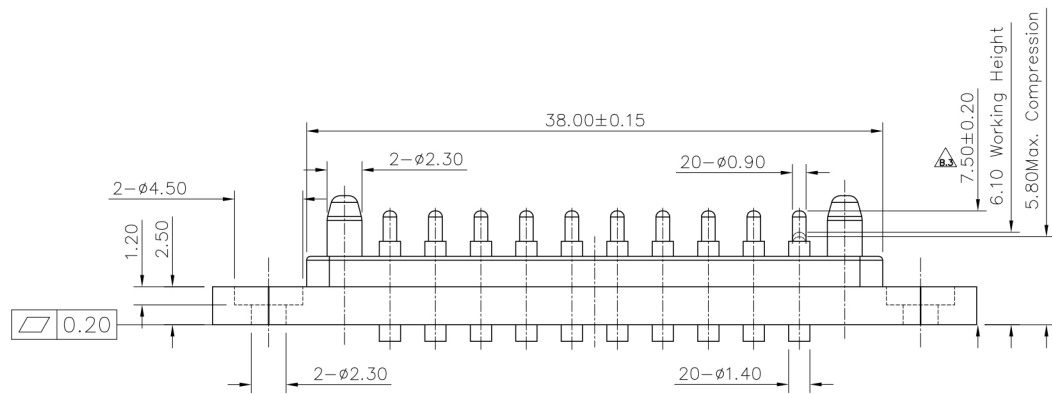
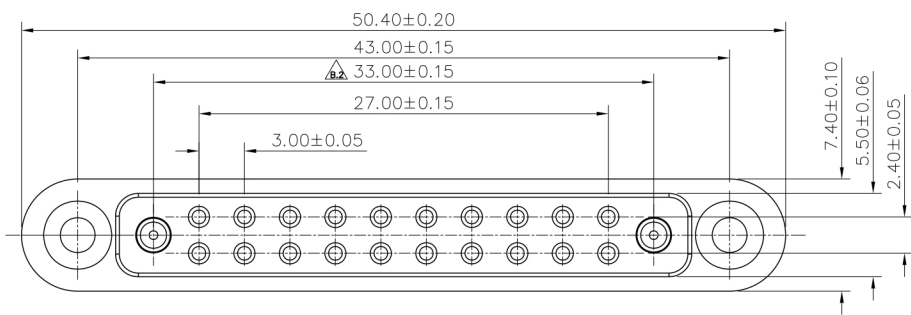


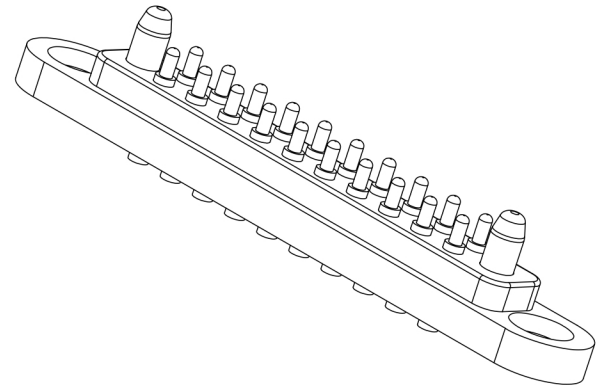
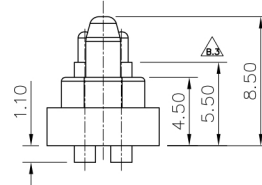
Please Approve this Drawing
Date
Signature



NO.	Part Name	Q'TY	Material	Plated surface
1	Plunger	20	C3604	Au 10u" Min. OVER 50~120 U" NI
2	Barrel	20	C3604	Au 10u" Min. OVER 50~120 U" NI
3	Spring	20	SUS 304	N/A
4	Guide Pin	2	C3604	Au 1u" Min. OVER 50~120 U" NI
5	Housing	1	HTN	N/A

NOTES:

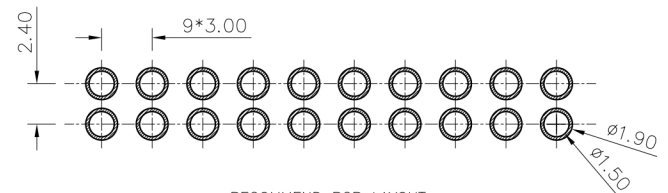
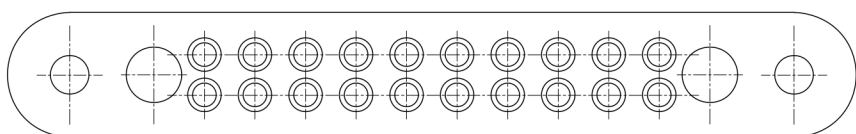
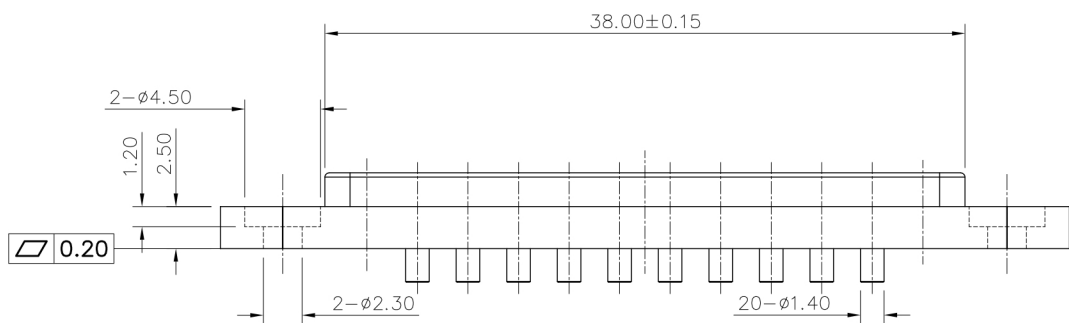
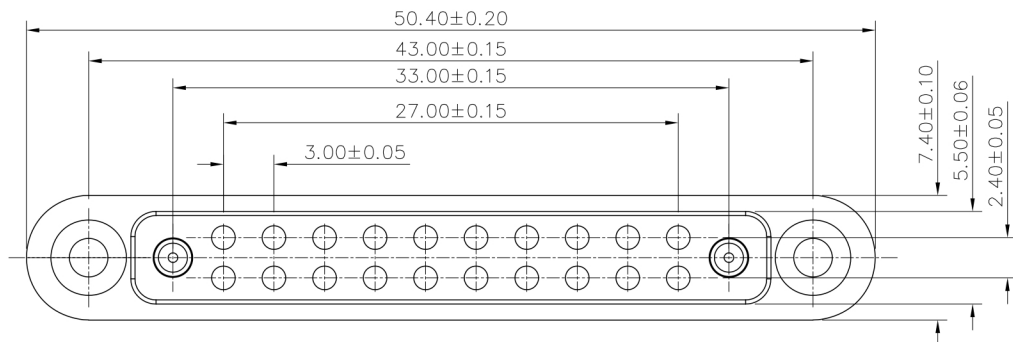
- Electrical
 - .Rated Current & Voltage : DC 12 V ; 2.0A MAX
 - .Contact Resistance: 50 mohm maximum at Working Height(Quiescence)
- Mechanical
 - .Full Stroke: 1.70 mm
 - .Working Stroke: 1.40 mm
- .Spring Force: 45gf±10gf at Working Height
 - .Durability:50,000 cycles(minimum)
- Environmental
 - .Operating Temperature: -25°C~+85°C
 - .Humidity Range: 10%RH~90%RH
 - .Salt Spray: 48 Hours
- When the current is greater than 1A then need to increase the time delay circuit(3 second)
- To avoid arcing issue, The adaptor start to power supply after connector mated fully.
- To ensure the best usage, please operate it based on the working height.
- .RoHs&HF compliant product.



DRAWN	Tony	DATE	2020.06.23			东莞市双盟电子有限公司	
CHECKED		SCALE	10:1	VER.	B.3		
APPROVED		TITLE	pogo pin connector.			Ang:	Dim:
PROJECT		DRAWING NO.	PPM.20-1581-1002PB			0 ±1°	0 ±0.15
SHEET	1 of 1	UNIT	mm			.0 ±0.5°	.0 ±0.10
						.00 ±0.25°	.00 ±0.06

VER.	DESCRIPTION	ECN NO.	DATE

Please Approve this Drawing
Date
Signature



NO.	Part Name	Q'TY	Material	Plated surface
1	Pin	20	无铅铜 10059	Au 10u" Min. OVER 50~120 U" NI
2	Housing	1	HTN	N/A

NOTES:

- Electrical
 - .Rated Current & Voltage : DC 12 V ; 2.0A Max.
 - .Contact Resistance: 50 mohm maximum at Working Height(Quiescence)
- Environmental
 - .Operating Temperature: -40°C~+85°C
 - .Humidity Range: 10%RH~90%RH
 - .Salt Spray: 48 Hours
- .RoHS&HF compliant product.

DRAWN	CDH	DATE	2022.09.01			东莞市双盟电子有限公司	
CHECKED		SCALE	10:1	VER.	A.0		
APPROVED		TITLE	20pin female connector.			Ang:	Dim:
PROJECT		DRAWING NO.	PPF.20-1158-1002			0 ±1°	0 ±0.15
SHEET	1 of 1	UNIT	mm			.0 ±0.5°	.0 ±0.10
						.00 ±0.25°	.00 ±0.06

VER.	DESCRIPTION	ECN NO.	DATE